

EXPOSURES

Springfield Photographic Society

Photo challenges

September: Splash

October: Patterns in Nature

November: Modes of Transportation

December: Making Something

January: Steps

February: Portrait of a Stranger

March: Long Exposure

April: Shoot Through Something

May: In Camera Motion

Calendar

Dec. 6 – Digital photo entries due for December exhibition.

Dec. 13 – Exhibition. Loomis Lakeside at Reed's Landing, 6:30 p.m. (Note time change.)

Dec. 27 – Members present My Favorite Images, 7 p.m. on Zoom.

Jan. 3 – Digital photo entries due for January exhibition.

Jan. 10 – Exhibition. Loomis Lakeside at Reed's Landing, 6:30 p.m. (Note time change.)

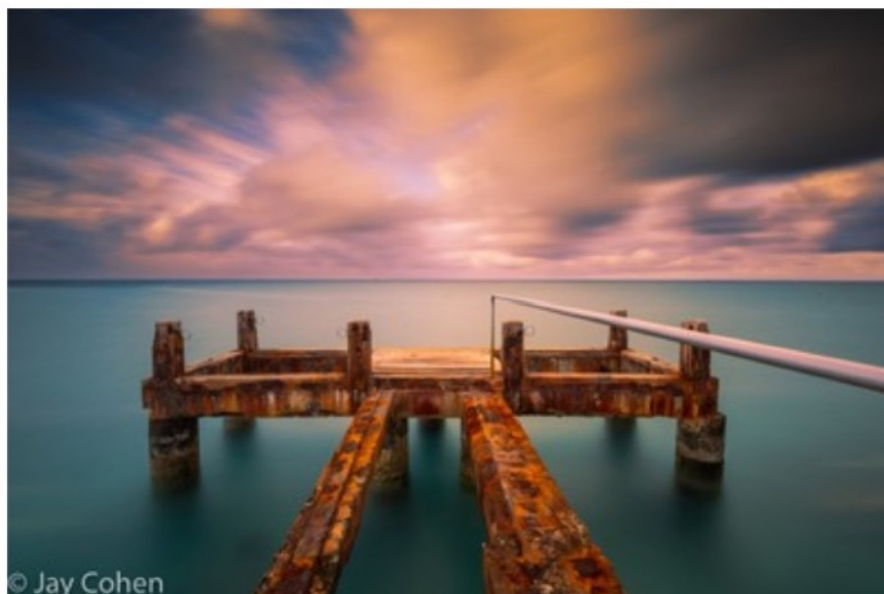
Jan. 20 – **Special Saturday program:** Andrew Fusek-Peters, Wildlife of Great Britain, 12 noon from Great Britain. Zoom.

Jan. 24 – Program night. Kate Silvia: Creativity with Textures. 7 p.m. Zoom.

Feb. 7 – Digital photo entries due for February exhibition.

Feb. 14 – Exhibition. Loomis Lakeside at Reed's Landing, 6:30 p.m.

Feb. 28 – Member showcase. 7 p.m. Zoom.



Jay Cohen explains how to achieve successful long exposure images

By JIM GILLEN

Jay Cohen likes playing with time.

In a talk with the Springfield Photographic Society last month, Cohen, a 15-year professional photographer, said he concentrates on long exposures to capture moments in time.

Cohen said he uses long exposure techniques such as slow shutter speeds and neutral density filters in his fine art photography to achieve his goals.

Long exposures are required when the photographer is faced with low light, when he/she wants to capture movement, to reduce distractions and for special effects, he said.

Based in Stamford, Conn., Cohen often visits the nearby seashore and New York City in attempts to achieve his goals. Central Park and Grand Central Station are favorite haunts for him. He often travels to the city early on Sunday mornings to create images when there are fewer people around and far less traffic.

He exhibited seashore photos he captured on Staten Island as well, often finding abandoned piers at sunrise or sunset. The long exposures ensure that water takes on a glass-like appearance, eliminating distracting ripples, he said.

Cohen also showed a photo of the Manhattan skyline shot from the Oak Bridge. He used a long exposure, 72 seconds, and a flashlight to fill in shadows in the trees and rocks on the shore.

(Continued on page 2)



Jay Cohen explains long exposure photography

(Continued from page 1)

The shutter speed for photographing stars should be limited to 20 seconds, he said, because stars move and will appear blurry at longer exposures.

Capturing movement, of course, requires patience, Cohen said.

His favorite subjects are water, clouds, people, cars and stars. Which shutter speed? It depends on how fast the subject is moving, light, lens focal length and distance to subject. His recommendations: Waterfalls, .5 to 5 seconds; waves, ¼ to ½ second; people, under 1 second; clouds, over 20 seconds; cars, over 5 seconds; and star trails, 15 minutes.

When shooting architecture, Cohen likes to include clouds, optimally moving directly towards or away from the building.

Distractions such as ripples, waves and people can be removed in camera, he said. Long exposures flatten the water as in the photos displayed here on page 1 and page 2, and can almost eliminate people from the image, as he did in front of a church in Iceland.

Special effects can be achieved with three techniques, zooming during an exposure, camera movement and shaky camera effect, Cohen said.

In one example, he showed a photo of the Manhattan skyline. He exposed for eight seconds, the first two still, the next four zooming and the final two still.

He also captured a woman riding down an escalator. She is recognizable, but the surroundings are blurred, making for a fascinating image.

The list of equipment needed for long exposure photography includes: DSLR or mirrorless camera, tripod, neutral density filters, remote shutter release, a cover for the viewfinder if shooting on a bright day, an app like Big Stopper for determining shutter speed, an extra battery and patience.

Even with the right gear, Cohen said there are challenges. Among them are camera shake, noise, getting the correct shutter speed, dirty filters and focusing in low light.

Exhibition judging for print, digital entries

Judges: Linda Kozloski, Dave Roback, Larry Sanchez and Tom Stratton.

Print

Artistic

Eileen Donelan	Dreaming	28	HA
Kevin Fay	Lotus Center	28	HA
Richard Harper	Field of Daisies	27	HA
Joyce Doty	Welcome Autumn	27	HA
Rosemary Polletta	Mysterious Portal	26	HM

Large Black & White

Joyce Doty	Bare Aspens	27	HA
Rosemary Polletta	Snagged	27	HA
Eileen Donelan	Zinnia	26	HM

Large Color

Rosemary Polletta	Forbidden Falls	30	HA
Eileen Donelan	Glasswing Butterfly	30	HA
Kevin Fay	Driftwood Beach	29	HA
Joyce Doty	Inhaling Autumn	28	HA

Small Color

Kevin Fay	Gondolier	29	HA
Rosemary Polletta	Delicately Unfolding	28	HA

Digital

Artistic

Pattie Freeman	Prairie Dog	30	HA
Joe Kruzal	Wonder Fall Mushroom	29	HA
Darlene Anderson	C is for Coffee	28	HA
Joyce Doty	Facing Colder Days	27	HA
Linda Kozloski	Soft Autumn Rose	27	HA
Mark Kula	Hot Summer Night	26	HM
Kevin Fay	Above Stowe Main Street	25	
Eileen Donelan	Embedded Mums	25	
Dave Roback	Fall's Firery Feature	25	
Judy Bolio	Ginko Swish	25	
Barbara Krawczyk	Tea Time	25	
Richard Harper	Day to Night Conversions	24	
Amy Dane	Fall Day in Maine	24	
Larry Sanchez	Honey Suckle Spin	24	
Rachel Bellenoit	Mexican Sunflower	24	
Gwen McNierney	Tree Movement	24	
Jim Gillen	Tulips	23	
Al LaFleche	Under an Alien Sun	23	
Tim Donelan	Dark Clouds	22	

Black & White

Amy Dane	Beer's Better in Brussels	29	HA
Eileen Donelan	1922 Magazine Cover	27	HA
Mark Kula	Old Timer	27	HA
Richard Harper	Soul Mates	27	HA
Kevin Fay	Florentine Friends	26	HM
Barbara Krawczyk	Peaceful Coexistence	26	HM

Joyce Doty	Pointing the Way	26	HM
Tom Stratton	The Guardian	26	HM
Linda Kozloski	Eastern Tiger Swallowtail	25	
Darlene Anderson	I See You	25	
Joe Kruzal	Misty Morning	25	
Jim Gillen	Spun Grass	24	
Frank Rucki	Bugatti	23	
Judy Bolio	Church Steeple	23	
Al LaFleche	Gunn Brook	23	
Megan Weiss	I Love a Car Show	23	
Pattie Freeman	Snowy Sandia Crest	23	
Tim Donelan	Send Me Dead Flowers	22	
Dave Roback	Stuck in the Mud	22	
Larry Sanchez	Leading the Race	21	

Challenge

Mark Kula	Faster	28	HA
Linda Kozloski	Gliding in at Sunset	28	HA
Kevin Fay	Mt Washington		
	Cog Railway	28	HA
Darlene Anderson	Boston T Stop	27	HA
Dave Roback	Drove My Chevy To	27	HA
Amy Dane	Dunes Day	27	HA
Gwen McNierney	Rafting	27	HA
Joyce Doty	Modes of Transportation 1	26	HM
Eileen Donelan	Old Fashioned Ride	26	HM
Pattie Freeman	Rio Grande Transport	26	HM
Joe Kruzal	T6 and TR6	26	HM
Bill Turney	Via the Burlap Highway	26	HM
Dave Taupier	Cars and Trucks Abstract	25	
Richard Harper	Modes of Transportation 2	25	
Barbara Krawczyk	No Customers	25	
Tom Stratton	Rolling in Dixville Notch	25	
Megan Weiss	THE Fire Truck	25	
Larry Sanchez	Triathlon Bike	25	
Jim Gillen	Airborne	24	
Frank Rucki	In the Fast Lane	24	
Rosemary Polletta	Mini Car Transport	24	
Tim Donelan	River Ferry	24	
Steve Giebutowski	Shifty	24	
Judy Bolio	1934 Transportation	23	
Marie Meder	Books On Wheels	23	
Al LaFleche	Commuter Ride	23	
Rachel Bellenoit	Hovering	23	
Larry Gallant	Clearance Granted	22	
Stephan Platzer	Boston Marathon Racer	21	

General

Dave Roback	Pergola Pattern	30	HA
Jim Gillen	Look at Me!	29	HA
Kevin Fay	Bride & Groom	28	HA

(Continued on page 4)

Exhibition judging for print, digital entries

(Continued from page 3)

Gwen McNierney	End of Summer Seeds	28	HA	Bill Turney	Bubble Chaser	23
Joe Kruzel	Watkins Glen Upstream	28	HA	Bill Jutte	Winter's Coming	23
Mark Kula	Fall Sparrow	27	HA	Nature		
Larry Sanchez	Less than a Minute	27	HA	Tom Stratton	Loon in the Reeds	30
Tim Donelan	Study Break	27	HA	Gwen McNierney	Looking Out at the World	29
Darlene Anderson	Central Park Reader	26	HM	Jim Gillen	Tree Swallow Talk	29
Rachel Bellenoit	Differential Grasshopper	26	HM	Pattie Freeman	Cranes at Sunset	28
Eileen Donelan	Dynamic Singer	26	HM	Richard Harper	Cleared for Landing	27
Barbara Krawczyk	Stuck Like Glue	26	HM	Kevin Fay	Hummingbird	27
Amy Dane	Which Way?	26	HM	Rachel Bellenoit	Male Monarch Butterfly	26
Guenther Schubert	Bird Portrait	25		Mark Kula	The Speed of White	26
Joyce Doty	Gales Pond	25		Larry Sanchez	Autumn Falls	25
Pat Thomas	Happy Marathoner	25		Pat Thomas	Majestic Wonder	25
Frank Rucki	Jacqueline	25		Tim Donelan	Autumn Colors by the Pond	24
Megan Weiss	Kateri Tekakwitha Parish	25		Megan Weiss	Beautiful Mates	24
Richard Harper	Marsha's Meadows	25		Joyce Doty	Bugling for the Ladies	24
Linda Kozloski	Migrating Through	25		Linda Kozloski	Feeding the Kids	24
Pattie Freeman	Clear Creek	24		Barbara Krawczyk	His Favorite Food	24
Al LaFleche	Old Stone Church	24		Judy Bolio	Kaaterskill Falls	24
Tom Stratton	Somewhere in New Hampshire	24		Eileen Donelan	Differential Grasshopper	23
Larry Gallant	Sunset at the Park	24		Stephan Platzer	Guzmania Conifera	23
Judy Bolio	Woodland Troll	24		Al LaFleche	Mantis	22
				Dave Roback	Tree with A View	21



"Triathlon Bike" by Larry Sanchez was among the entries in the General category in November.

Print exhibition images for November



Print images in November, clockwise from above, "Forbidden Falls" and "Delicately Unfolding," both by Rosemary Polletta, "Bare Aspens" by Joyce Doty and "Field of Daisies" by Richard Harper.





Clockwise from above, "Welcome Autumn" by Joyce Doty, "Glasswing Butterfly" by Eileen Donelan, "Mysterious Portal" by Rosemary Polletta, "Zinnia" by Eileen Donelan and "Snagged" by Rosemary Polletta.





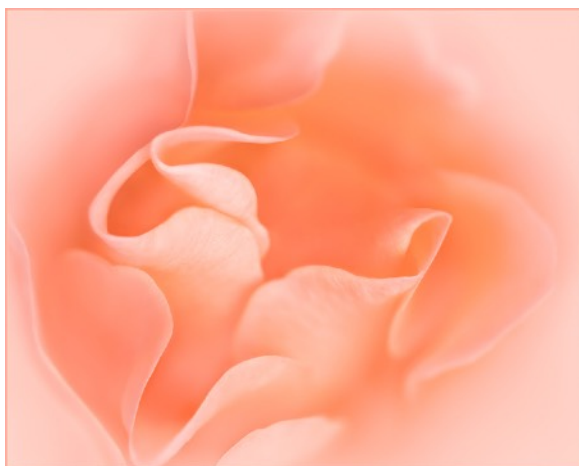
Clockwise from left, "Gondolier" and "Lotus Center," both by Kevin Fay, "Inhaling Autumn" by Joyce Doty, "Dreaming" by Eileen Donelan and "Driftwood Beach" by Kevin Fay.



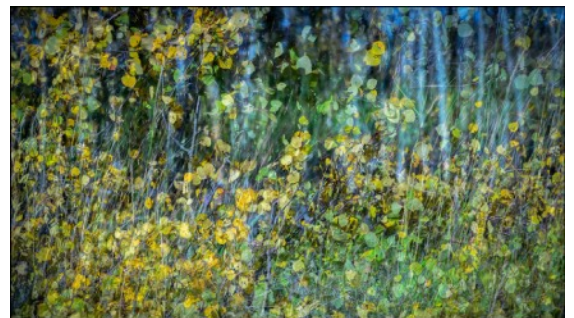
Digital exhibition images for November

Artistic

Atop the list of Artistic images for November is, left, "Prairie Dog" by Pattie Freeman. Below are "Soft Autumn Rose," left, by Linda Kozloski and "Wonder Fall Mushroom," right, by Joe Kruzel.



Also among the top scorers are, clockwise from right, "C is for Coffee" by Darlene Anderson, "Facing Colder Days" by Joyce Doty and "Hot Summer Night" by Mark Kula.



Black & White



Top black and white entries include, clockwise from above, "Beer's Better in Brussels" by Amy Dane, "1922 Magazine Cover" by Eileen Donelan and "Peaceful Coexistence" by Barbara Krawczyk.





Clockwise from top, "Soul Mates" by Richard Harper, "The Guardian" by Tom Stratton and "Old Timer" by Mark Kula.



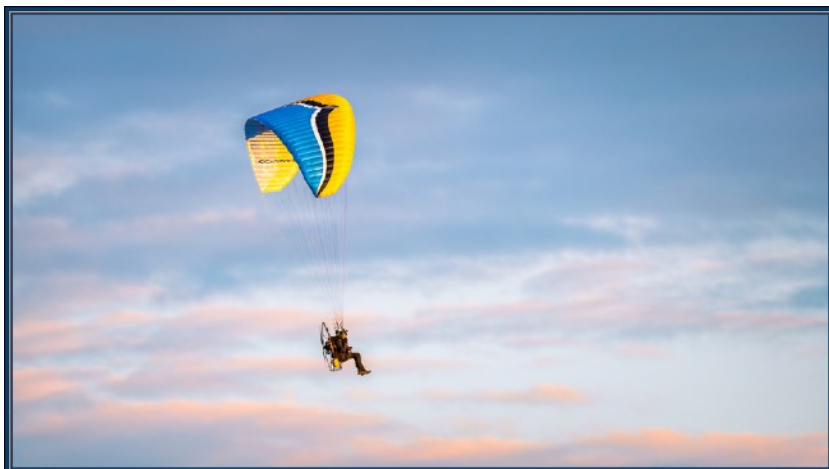
"Florentine Friends," above, by Kevin Fay and "Pointing the Way," left, by Joyce Doty.

Challenge: Modes of Transportation

The challenge for November is Modes of Transportation.

Top scorers include, clockwise from right, "Dunes Day" by Amy Dane, "Drove My Chevy To" by Dave Roback, "Rafting" by Gwen McNierney, "T6 and TR6" by Joe Kruzel and "Boston T Stop" by Darlene Anderson.





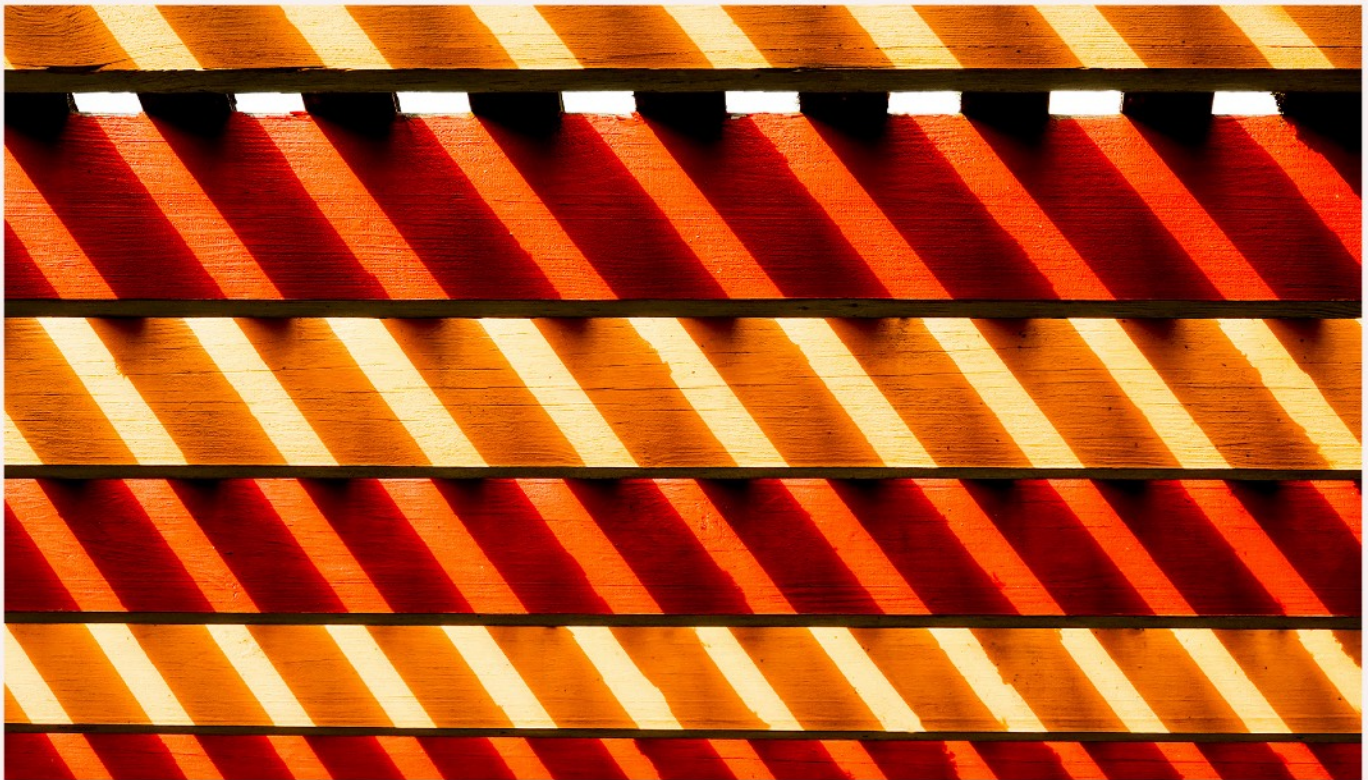
Clockwise from top, "Faster" by Mark Kula, "Old Fashioned Ride" by Eileen Donelan, "Gliding in at Sunset" by Linda Kozloski and "Mt Washington Cog Railway" by Kevin Fay.



Clockwise from top, "Modes of Transportation 1" by Joyce Doty, "Via the Burlap Highway" by Bill Turney and "Rio Grande Transport" by Pattie Freeman.



General

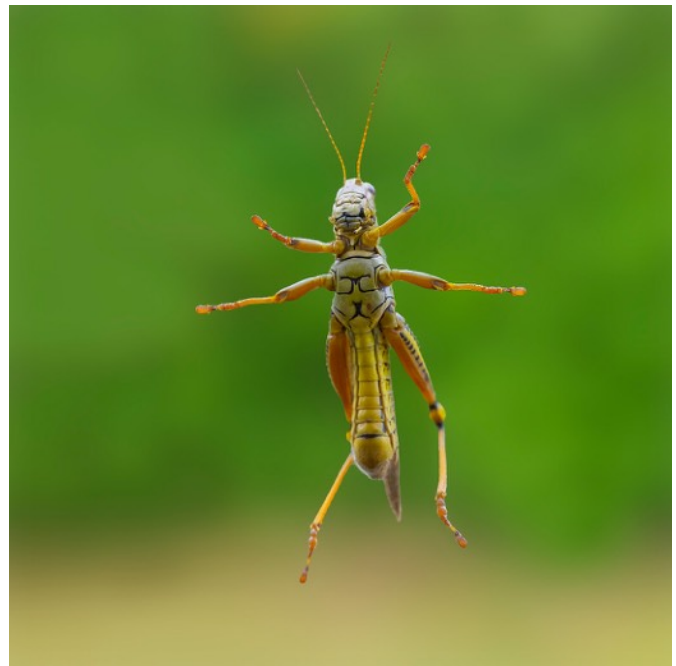


Among the best in General are, clockwise from top, "Pergola Pattern" by Dave Roback, "Dynamic Singer" by Eileen Donelan and "End of Summer Seeds" by Gwen McNierney.

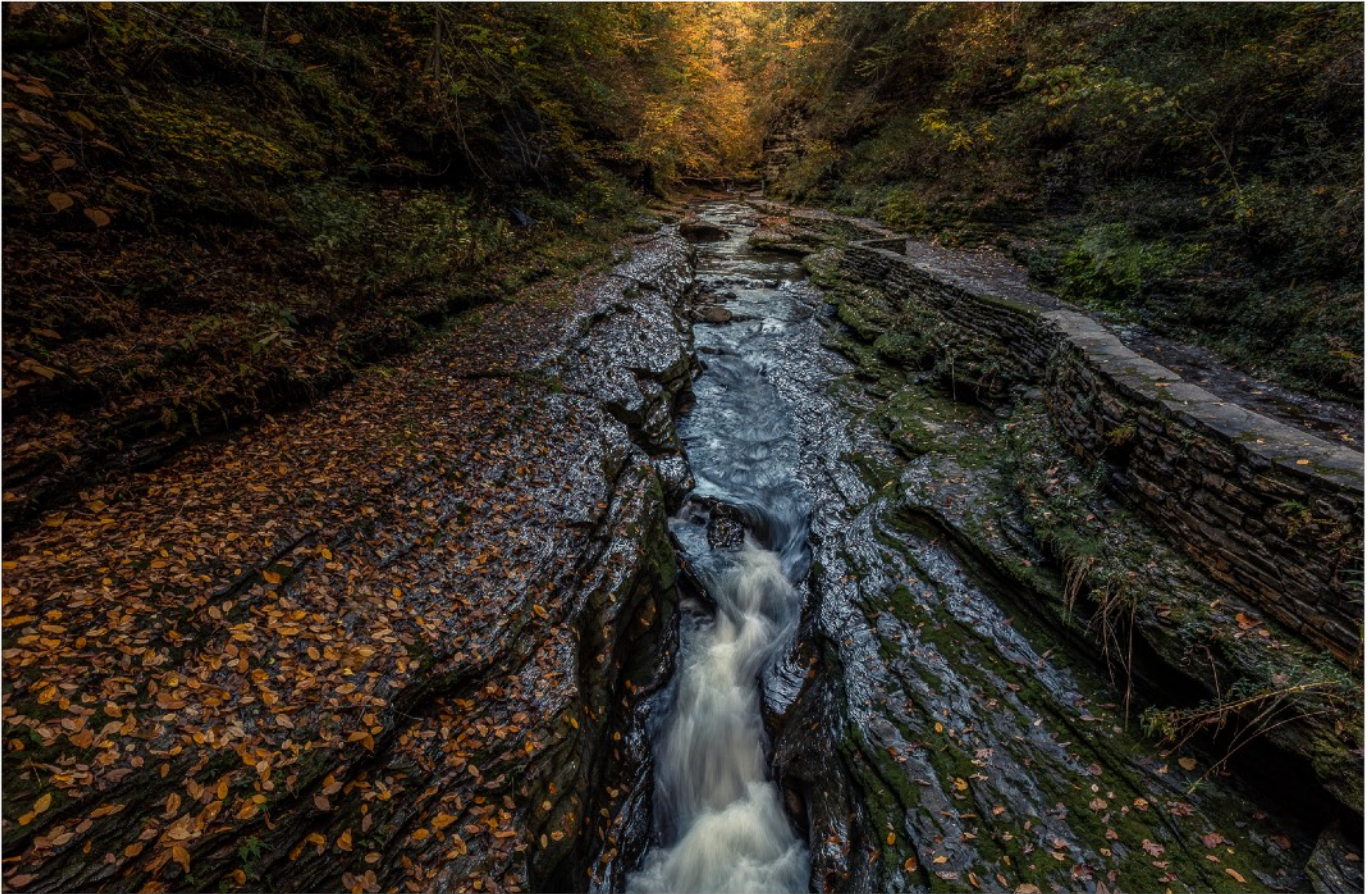


Clockwise from above,
"Stuck Like Glue" by
Barbara Krawczyk, "'Look
at Me!" by Jim Gillen, "Less
Than a Minute" by Larry
Sanchez and "Study Break"
by Tim Donelan.





Clockwise from top, "Bride & Groom" by Kevin Fay, "Differential Grasshopper" by Rachel Bellenoit and "Which Way?" by Amy Dane.



Clockwise from above, "Watkins Glen Upstream" by Joe Kruzal, "Central Park Reader" by Darlene Anderson and "Fall Sparrow" by Mark Kula.



Nature



Among the top Nature entries are, clockwise from above, "Loon in the Reeds" by Tom Stratton, "Hummingbird" by Kevin Fay and "Looking Out at the World" by Gwen McNierney.



Clockwise from left, "Tree Swallow Talk" by Jim Gillen, "Cranes at Sunset" by Pattie Freeman and "Cleared for Landing" by Richard Harper.





"The Speed of White," above, by Mark Kula and "Male Monarch Butterfly," below, by Rachel Bellenoit.



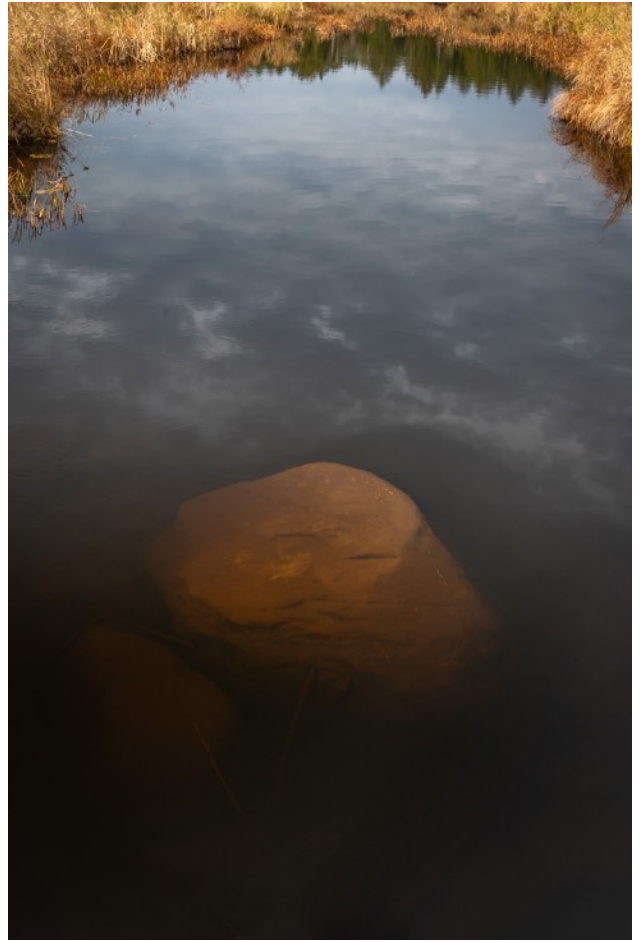
Members shoot frosty sunrise in Goshen



Several SPS members trekked to Goshen on a cold November morning to view and photograph the sunrise from the Daughters of the American Revolution fire tower and Chapel Falls. Along on the trip were Judy Bolio, Nancy Cunningham, Kevin Fay, Bob Labrie, Karen Lemoine and Larry Sanchez. Nancy Cunningham photos. More photos on following pages.



In top photo, left to right, Nancy Cunningham, Bob Labrie, Kevin Fay, Judy Bolio and Larry Sanchez. At left, left to right, Karen Lemoine, Bob Labrie, Larry Sanchez and Nancy Cunningham. Kevin Fay photos.



Larry Sanchez photos of Chapel Falls and the Berkshires.





Top two photos, sunrise by Judy Bolio. Below, right, Karen Lemoine lines up a photo a rocky stream perch. At left, Kevin Fay uses a controller to operate his drone camera.



**SPRINGFIELD PHOTOGRAPHIC SOCIETY
APPLICATION FOR MEMBERSHIP 2023-2024**

87th Year

Part I

NAME _____

SPOUSE/PARTNER 1st NAME _____

FAMILY NAMES (family membership) _____

ADDRESS _____

CITY, STATE, ZIP _____

PHONE (home) _____ (cell) _____

EMAIL _____

Add my email to private page on club website for member questions?

YES NO

NEW MEMBER RENEWAL

Membership Fees

Individual **\$40**

Family **\$55**

High School Student **Free**
(Copy of student ID required)

Additional Donation (Voluntary):

\$10

Other Donation \$ _____

I prefer to pay my dues at the historic rate:

Individual **\$35**

Family **\$50**

PSA MEMBER? Yes No

Part II

Springfield Photographic Society Field Trip Release Form

I (we), the undersigned, understand that the Springfield Photographic Society requires participants to share responsibility for their own safety and the safety of others during field trips. We hereby acknowledge that as participants in field trips we may be exposed to risks, including but not limited to, vehicular travel over land and water, foot travel over difficult terrain, and unexpected weather conditions. We may also encounter hazardous plants, wildlife, and/or insects. In the event of injury, we understand that we may face delays in reaching professional medical help. We fully accept these risks and agree to hold the Springfield Photographic Society, its officers, directors, volunteers, and agents free from any and all liability for injuries and/or loss which we may incur, directly or indirectly, while on a trip.

<i>Signature</i>	<i>Printed Name</i>	<i>In Case of Emergency (Provide a name and phone number)</i>

Please make your check payable to ***Springfield Photographic Society***
Mail to SPS Treasurer ***Dee Nacewicz, 21 Warren St., Agawam, MA 01001***
(or bring them to the next meeting)

Agawam library seeks entries for photo show

The Friends of the Agawam Public Library is seeking entries for its 4th Open Judged Virtual Photography Show.

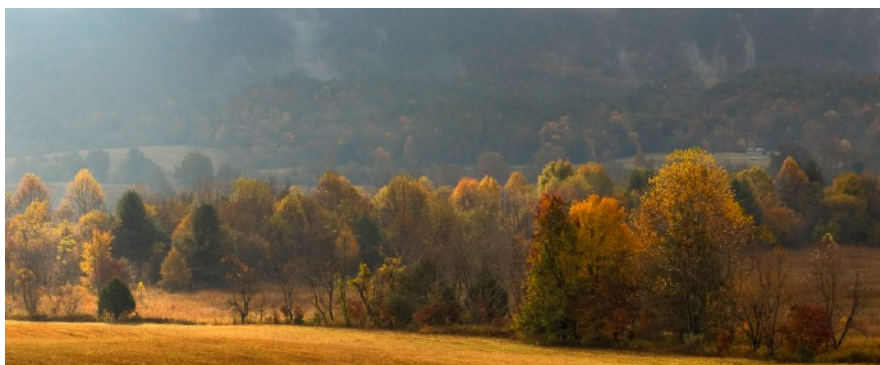
The deadline for entries is Feb. 15, 2024. Send to Bob Kadis at r.kadis@comcast.net. The online display with four categories (creative, nature, photojournalism and pictorial) will be posted after March 15.

The fee is \$25 per entry. A payment link can be found at the FAPL website. Options are PayPal and debit or credit card.

Awards will include best in show (\$300) and 1st (\$120), 2nd (\$80) and 3rd (\$60) in each category and eight honorable mentions (\$25 each).

Judges are SPS members Tim Donelan and Dave Roback.

The FAPL website to download the prospectus and entry form is <https://www.agawamlibrary.org/about-2/friends/#FriendsPhotoShow>.



The sweeping autumn landscape, above, is one of numerous images in Rosemary Polletta's exhibit "My Smoky Mountain Landscapes."

Rosemary Polletta's Smoky Mountain exhibit moves to Longmeadow Adult Center in January

Rosemary Polletta's exhibit entitled "My Smoky Mountain Landscapes" will be on display at the Longmeadow Adult Center, 211 Maple Road, Longmeadow from Jan. 4 through Feb. 5.

A reception will be held on opening day, Jan. 4, from 5 to 7 p.m.

The exhibit was presented at the Robert Floyd Gallery in Southampton recently.

SPS Officers and Directors

Elected positions

President	Kevin Fay
Vice President (Prints)	Tim Donelan
Vice President (Digital)	Vacant
Treasurer	Dee Nacewicz
Secretary	Barbara Krawczyk
Directors	Denis Duquette, Jim Gillen, Richard Harper, Joe Kruzel, Mark Kula, Al LaFleche, Fred LeBlanc, Dave Roback and Guenther Schubert

Appointed positions

Judge Coordinator/Exhibition Standards	Barbara Krawczyk
Membership Chair	Dee Nacewicz
NECCC Representative	Richard Harper
Newsletter Editor	Jim Gillen
Social Media	Al LaFleche
Trip Coordinator	Richard Harper
Website Manager	Vacant

EXPOSURES

Exposures is the monthly newsletter of the Springfield Photographic Society. SPS is affiliated with the Photographic Society of America and the New England Camera Club Council. Society exhibition meetings are held at the Loomis Lakeside at Reeds Landing, 807 Wilbraham Road, Springfield, at 6:30 p.m. See Calendar for the schedule. Program nights usually are conducted at 7 p.m. on Zoom. The SPS website is <https://springfield-ps.com>. President Kevin Fay can be reached at kevin.fay44@gmail.com



Member